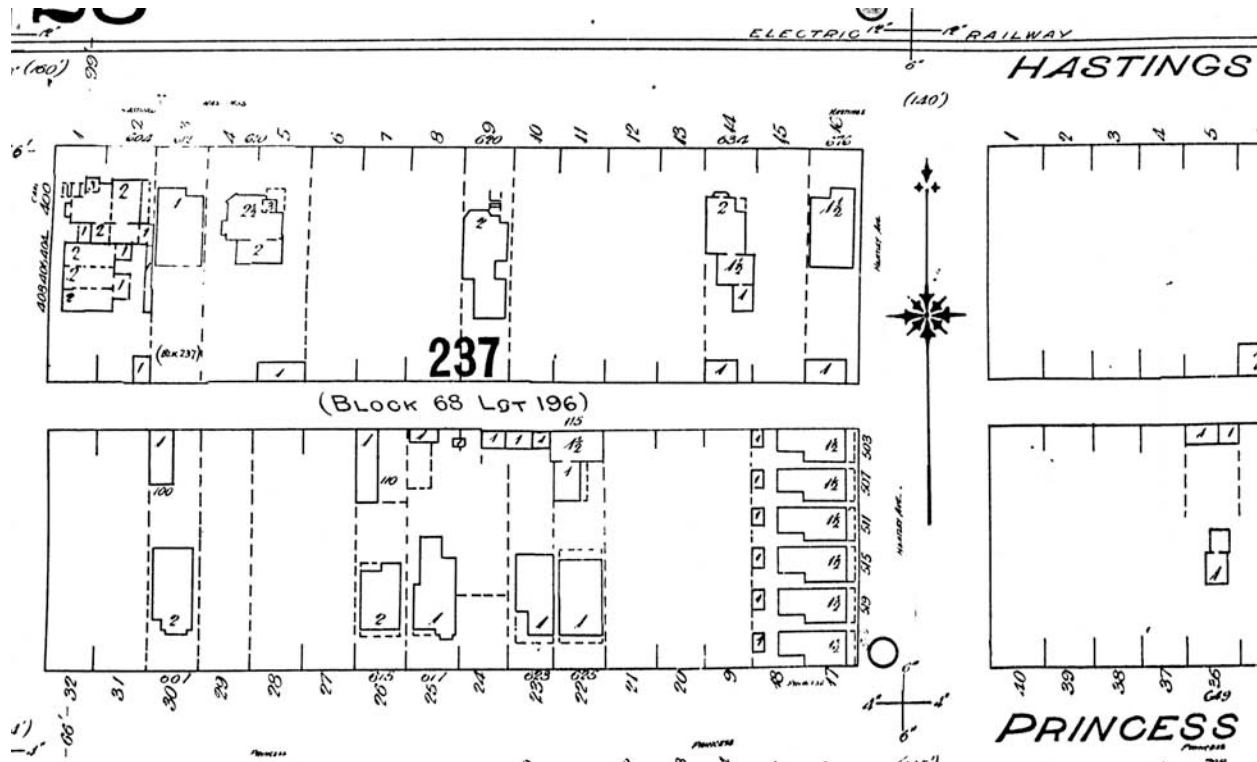


The Heatley Block in Four Fire Insurance Maps

CVA Map 384, Plate 14, 1901

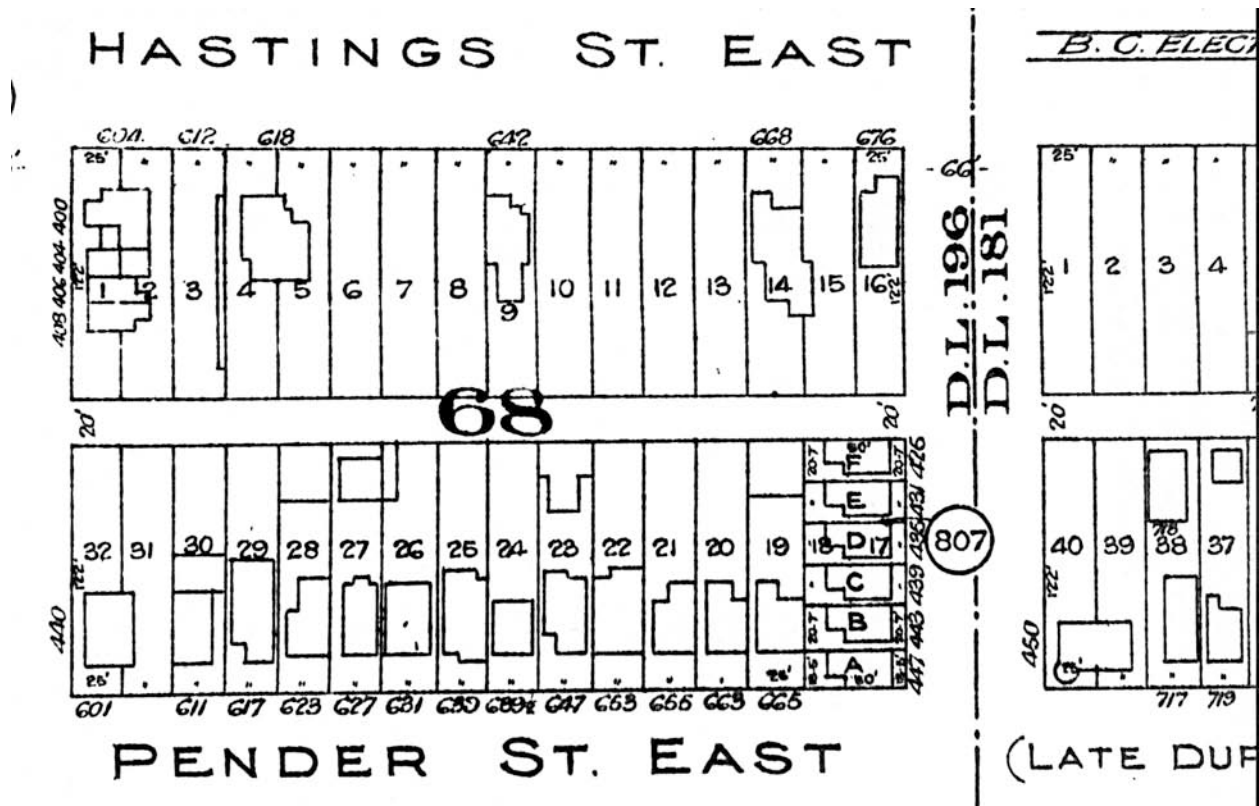


Here is a map of the corner of East Hastings and Heatley Avenue drawn up in 1901. Note the original location of the two houses, 634 East Hastings and 676 East Hastings. Even though the BC Electric Railway streetcar line runs all the way up Hastings to Commercial, large sections of East Hastings still remain undeveloped. This is how the immediate neighbourhood looked eleven years after the house at 634 East Hastings was built and when grocer Christopher W. Ford and his family lived at 634 East Hastings and school teacher Thomas A. McGarrigle and his extended family lived at 676 East Hastings.

Note how East Pender was then named Princess Street. Originally it was named Dupont but was renamed Princess in order to disassociate this section of the street from the red light district and Chinatown further west.

The Heatley Block in Four Fire Insurance Maps

CVA Map 342, Volume 2 Plate 70, 1913

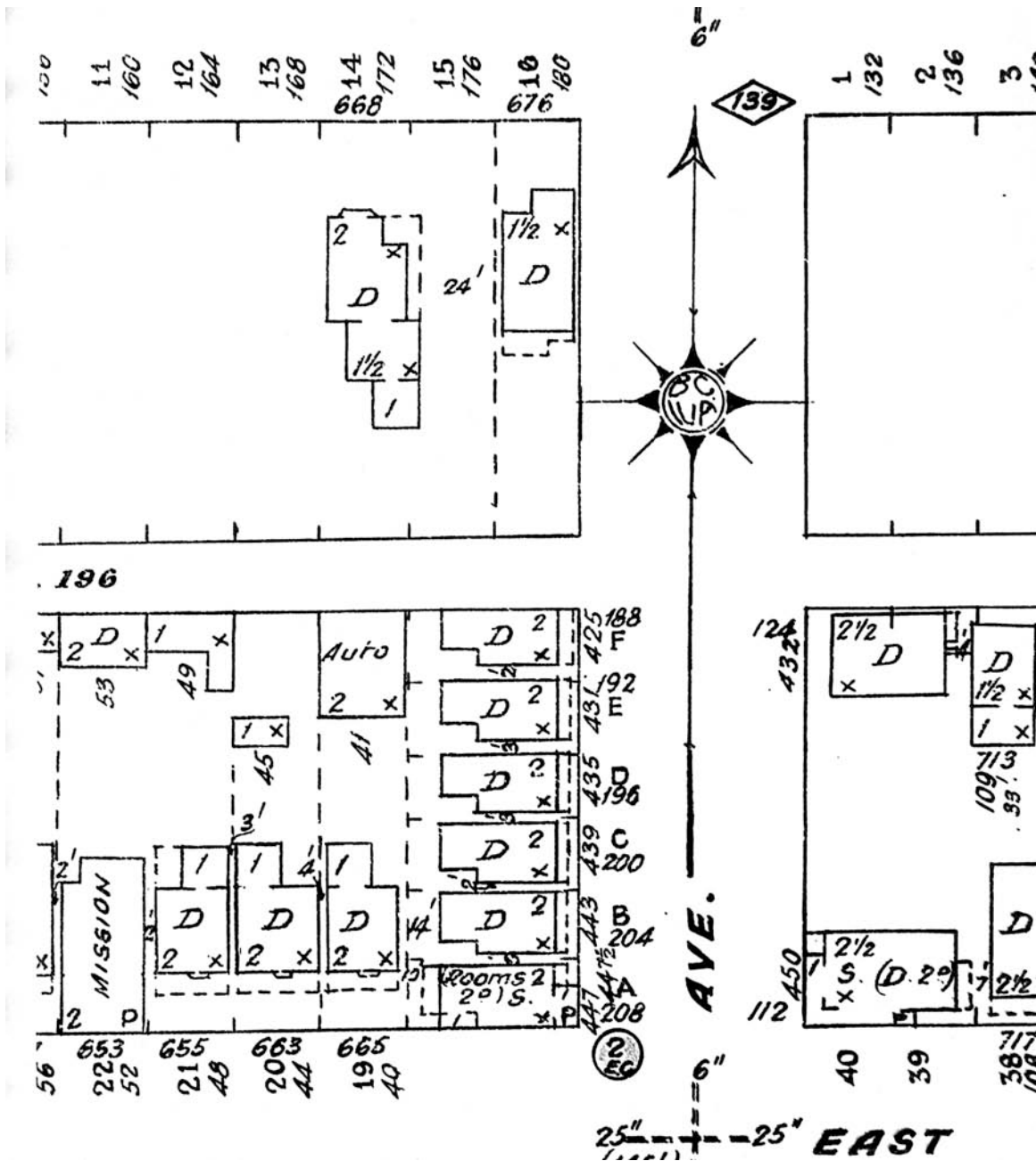


This section of the 1912-13 Goad's Atlas of Vancouver shows a Hastings Street little changed from the map drawn up twelve years before. Of note, however, is the pace of development along Pender Street East which renamed Princess and the remaining two blocks of Dupont Streets in 1907. By this time, 634 East Hastings has been renumbered 668 East Hastings.

This is how the immediate neighbourhood looked when plumbing foreman Frank Morgan and his wife Marie lived at 668 East Hastings and Michael Horshoski lived at 676 East Hastings.

The Heatley Block in Four Fire Insurance Maps

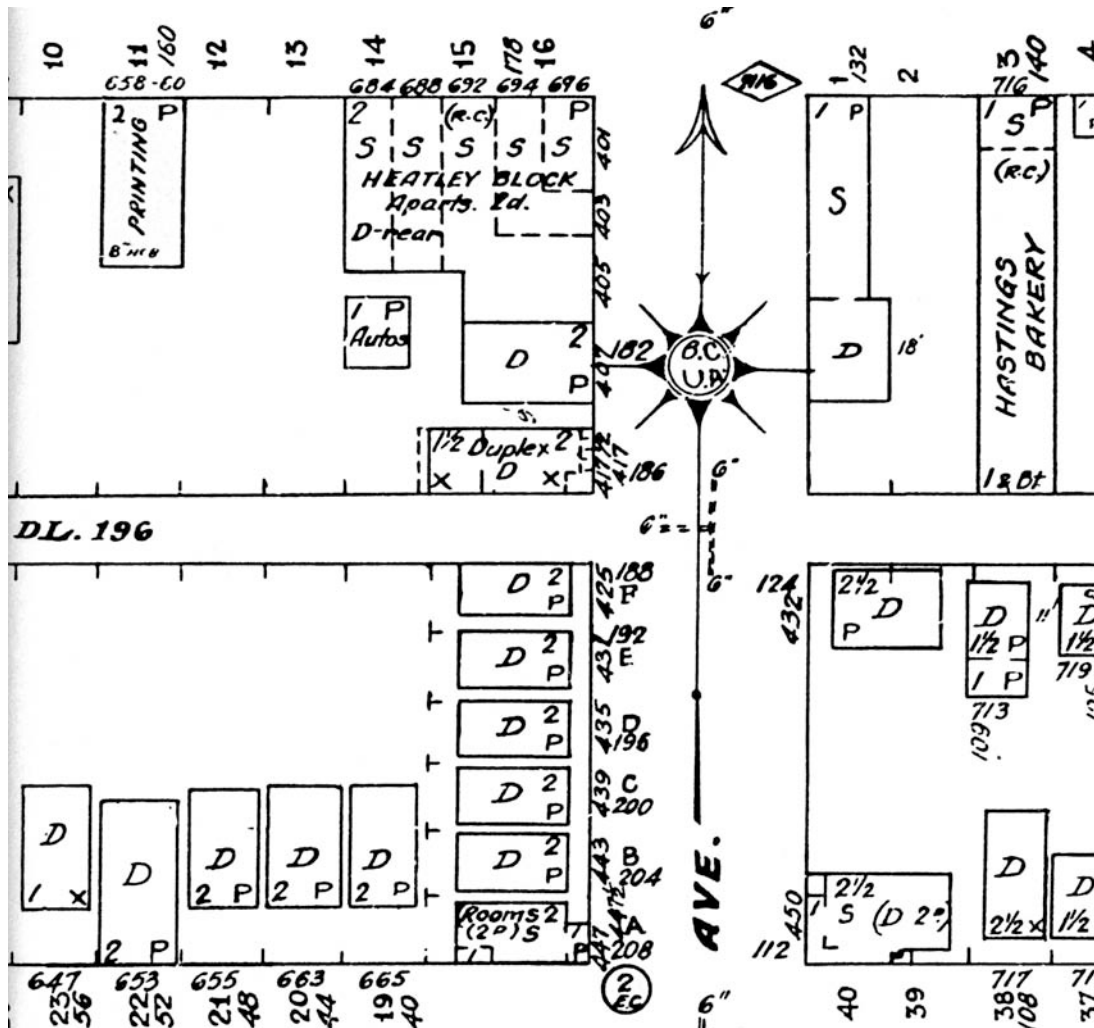
CVA Map 599, Volume 3 Plate 311, January 1930



This map shows a still very undeveloped East Hastings just a year before the Heatley Block was built in 1931. In 1930, miner Michel Bodnarchuk lived at 668 East Hastings and the Kachuk family lived at 676 East Hastings.

The Heatley Block in Four Fire Insurance Maps

CVA Map 610, Volume 3 Plate 311, August 1956



This map, drawn up twenty-five years after the Heatley Block was built, shows a much more developed East Hastings. The two original houses have been moved to face Heatley Street. 417 Heatley is the original 1889 house (668 East Hastings), which 407 Heatley is the Klondyke era house which once stood at 676 East Hastings. Note the five retail spaces facing East Hastings. 405 Heatley is the entrance to the apartments on the second floor of the Heatley Block, while 401 and 403 Heatley appear off and on as office space. 403 Heatley survived into later years a Suite A of the Heatley block and was used as the office of the block manager.

In 1956, 684 East Hastings is Frieda's Beauty Shoppe. The proprietor, Mrs. Helen Lacusta lives behind the shop. Note the D to indicate "dwelling" at the rear of her shop. 688 is Iser Shapiro's piano repair shop, 692 is vacant. 694 is listed as the home of widow Mildred Parkins, while 696 East Hastings is Braun's Burger Bar.